

Bronx Waterfront Vision



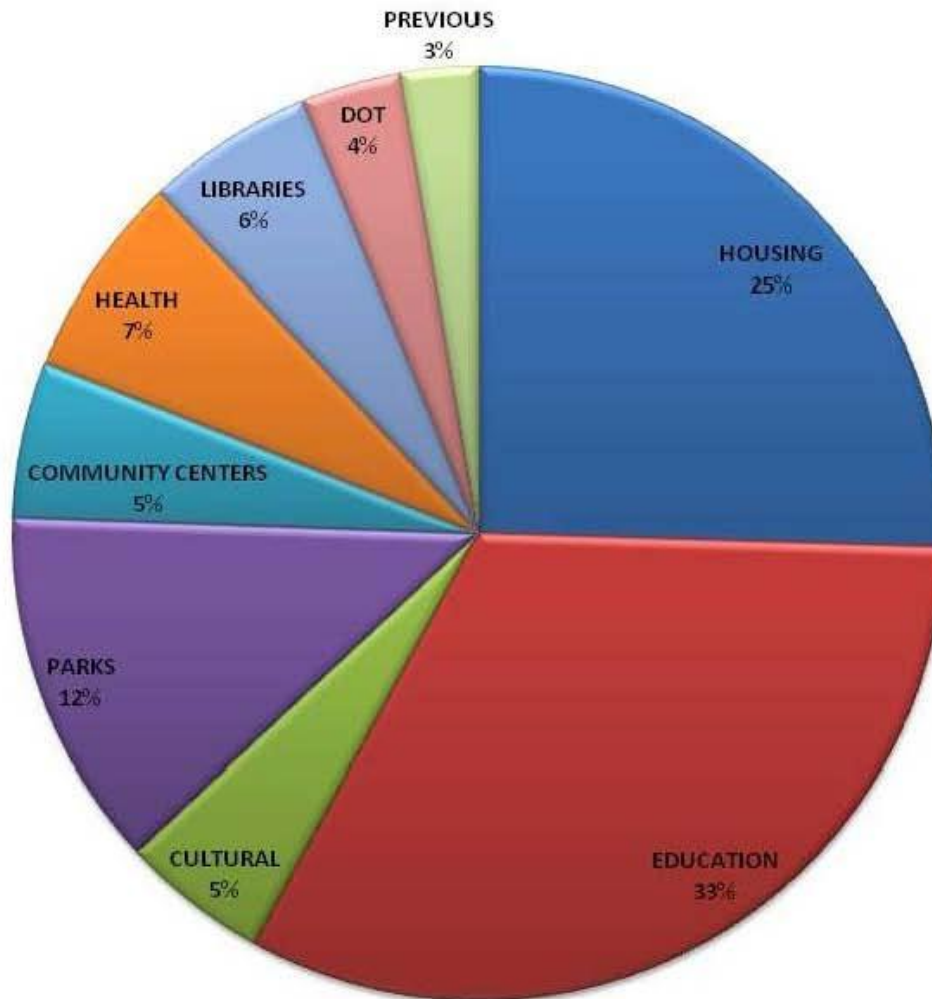
Ruben Diaz Jr.
Bronx Borough President

February 2011

Capital Projects Funding Summary

Fiscal Year 2011

Office of the Bronx Borough President Ruben Diaz Jr.



CATEGORY	PROJECT #	REQUEST TOTAL	% TOTAL
EDUCATION	69	\$12,227,000	32.50%
HOUSING	16	\$9,582,000	25.50%
PARKS	10	\$4,690,000	12.50%
HEALTH	4	\$2,650,000	7.00%
LIBRARIES	5	\$2,200,000	5.80%
COMMUNITY CENTERS	4	\$2,037,000	5.40%
CULTURAL	5	\$1,919,000	5.10%
DOT	3	\$1,311,000	3.50%
PREVIOUS	3	\$1,000,000	2.70%
TOTAL	119	\$37,616,000	100%

Introduction

Objectives for the Bronx Waterfront:

- Establish and Improve Public Access

- Protect our Natural Resources

- Upgrade Existing Parkland

- Identify Future Park Sites

Three Bronx Waterfronts

A photograph of a park waterfront. In the foreground, there is a concrete path and a landscaped area with dark mulch and some green shrubs. A body of water, likely a pond or a small river, occupies the middle ground. In the background, there is a dense line of green trees and a brick building with some graffiti on its wall. The sky is overcast.

Harlem River

Bronx River

East River/Long Island Sound

The Harlem River

- Community Districts Profile
- Recent Park Development
- Potential Sites for Public Access

Community District 1

Number of Residents: 87,104
Residents Younger Than 18: 31,022 (33%)
Acres of Parkland: 60.79
Median Household Income: \$19,714
Persons Per Acre: 1,432

Community District 4

Number of Residents: 139,560
Residents Younger Than 18: 47,450 (34%)
Acres of Parkland: 175
Median Household Income: \$25,255
Persons Per Acre: 797

**Harlem River
Community
Profiles**

Community District 5

Number of Residents: 128,325
Residents Younger Than 18: 46,197 (36%)
Acres of Parkland: 46
Median Household Income: \$24,392
Persons Per Acre: 2,789

Community District 7

Number of Residents: 141,418
Residents Younger Than 18: 43,839 (31%)
Acres of Parkland: 312
Median Household Income: \$30,782
Persons Per Acre: 453

Persons Per Acre Citywide: 279

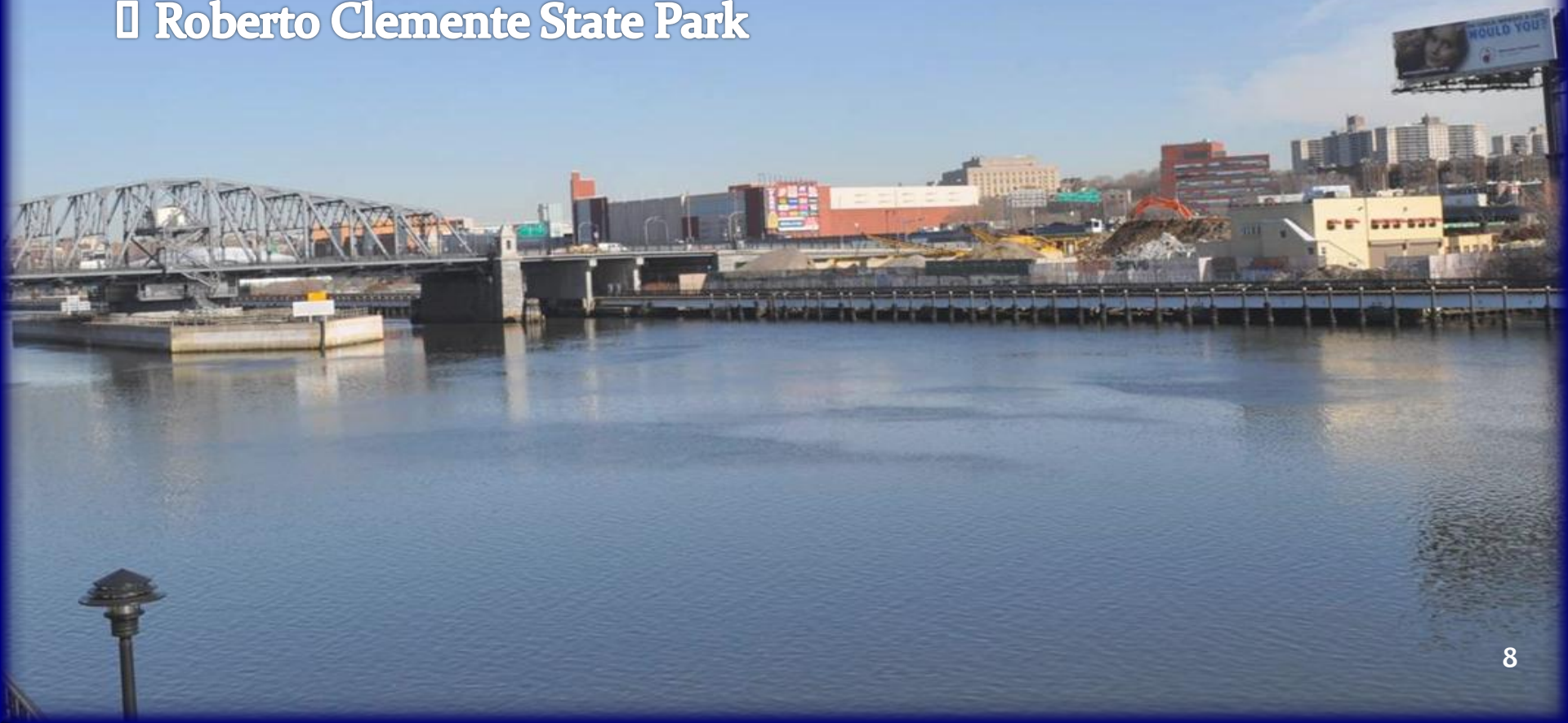
Median Household Income Citywide: \$48,750

Harlem River



Harlem River Parks

- ▣ Mill Pond Park/Building J
- ▣ The Highbridge
- ▣ Bridge Park
- ▣ Roberto Clemente State Park



Mill Pond Park

Where We've Been



Mill Pond Park

Where We Are Now



Mill Pond Park/Building J

15 acres

**Tennis Center, District Park office and
LEED certified**



The Highbridge

Challenge: Restore Historic Bridge between the Bronx & Manhattan



Bridge Park, 5.2 acres

Challenge: Complete design and construction



Roberto Clemente State Park



Harlem River: Future Sites for Public Access

- Park Avenue Street End
- Lower Grand Concourse Rezoning Park Site at E. 144th Street
- Pier 5*
- Highbridge Yards Public Easement
- New Tabernacle Baptist Church Parcels*
- DCAS Scaffolding Parcel*
- Fordham Landing Parcel
- DCAS Parcel North of University Heights Bridge*

Lower Grand Concourse Rezoning Park Site at E. 144th Street, 2.2 acres



**Challenge: Purchase property & relocate tenant;
identify funding for park development**

Pier Five, 4.4 acres

A photograph of Pier Five in New York City. In the foreground, there is a large, rusty metal frame structure. The ground is covered in snow and ice, with some patches of brown earth visible. In the background, a large white dome structure is prominent, surrounded by a fence. Beyond the dome, a city skyline with various buildings is visible under a clear blue sky.

Challenge: Identify Funding for Park Development

Metro North Railroad Maintenance Facility

An aerial photograph of the Metro North Railroad Maintenance Facility. The facility is a large industrial complex with a prominent blue-roofed building. It is situated along a waterfront, with a bridge visible in the background. The surrounding area includes a parking lot, some smaller buildings, and a city skyline in the distance.

Challenge: Acquire a public easement along the waterside portion of yard

New Tabernacle Baptist Church Parcels, 2 acres

A photograph showing a hillside under a clear blue sky. In the background, a tall, white church steeple with a dark roof stands on the crest of the hill. The hillside is covered with bare, brown trees and some patches of snow. In the foreground, the front of a blue and red pickup truck is visible on the left. To the right of the truck, there is a fenced-in area containing a large pile of debris, including what looks like a collapsed roof or structure, and some orange traffic cones. Bare trees are also visible on the right side of the frame.

**Challenge: Purchase Property & identify funding
for park development**

DCAS Scaffolding Site, 4.4 acres

Challenge: Relocate tenant; transfer property to Parks Dept.; identify funding for park development

Fordham Landing Site, 3.7 acres



Challenge: Purchase Property & identify funding for park development

DCAS Parcel North of University Heights Bridge

3.7 acres

Challenge: Transfer property to Parks Dept.; Identify funding for park development